

MIGRATION MONITORING AT PRINCE EDWARD POINT

FALL 2013

by

Stéphane Menu, Ph.D.
502007 Grey Road #1
Georgian Bluffs
Ontario, N0H 2T0
stefmenu@gmail.com

*prepared
for*

PRINCE EDWARD POINT BIRD OBSERVATORY

November 2013

Executive Summary

In this document are summarized the results of migration monitoring at Prince Edward Point in fall, 2013. Fall fieldwork began on August 18 and ended on October 31 for a total of 75 consecutive days of coverage. A total of 145 species were detected during the monitoring period. A total of 5,022 birds of 84 species were banded and 321 birds of 46 species were recaptured during “diurnal” banding, whereas a total of 212 Northern Saw-whet Owls, one Barred Owl, and one Eastern Screech Owl were banded during the “owl” banding from September 20 to October 31.

The defining characteristic of Fall 2013 was a dry and warm end of summer and early fall, mainly from August to mid-October. Precipitation was limited both in extent and intensity, except for a few rainstorms at the end of October, usually accompanied by strong wind. This relatively fair weather allowed for a very good coverage, with about 80% of potential hours realized for normal daily banding and only 6 days without banding due to bad weather this fall. The special “bobolink” banding monitoring operated from August 18 to September 5, with no call broadcast from August 23 to 31 due to technical problem. Regardless, coverage was close to 100% in regard to net opening. On the contrary, owl banding was frequently hampered by strong wind and/or rain: 10 nights were completely lost to banding and a few others were cut short, for coverage of 66%.

As usual, migration was in a boom and bust fashion, at least, as expressed by banding numbers: there were 37 days (out of 69 days with banding) with 5 (the lowest daily total) to 50 birds banded, whereas there were only 6 days with more than 200 birds banded (Fig.1 and Table 1; see Table 4 for the complete list of birds banded). The highest banding total was on October 15 with 306 birds. Only two species, Golden-crowned and Ruby-crowned Kinglets, represent 42% of the banding total. The 10 top species account for 71% of the banding total (Table 2). Most species were banded in relatively small numbers: 65 species have less than 50 individuals banded each (Table 3). Only 9 species have more than 100 birds banded each. On September 22, 50 species were detected during the 6 hours of migration monitoring, the highest diversity for the fall. No new species were added to the PEPtBO checklist this fall. Totals for fall 2013 were around average for birds captured in mist-nets and very low for ground traps (Fig. 2). Captures vary

greatly between years and weeks: in Fall, captures are relatively low from mid-August to late September and then increase rapidly to peak in mid-October (Fig. 3). This year, the pattern is no different, with the total of birds captured in mist nets for the week of October 11-17 being the highest ever across all Fall seasons. The highlights of the fall were, among others, a Connecticut Warbler banded on September 1, a Northern Goshawk banded on October 9, two Yellow-billed Cuckoo banded on August 22 and September 27.

A total of 212 Northern Saw-whet Owls were banded between September 20 and October 30. As in other bird observatories this fall, very few hatch-year birds were captured: 19 birds out of 212, that is, a little less than 10%. The most common age class was second-year birds, with 68% of all captures (Fig.4). Attracted by a broadcast of male call, most owls captured were, unsurprisingly, female: 170 birds, or 80%. Only 7.5% of birds captured were male, with the remaining 12.5% of unknown sex. In addition to Saw-whets, one Eastern Screech Owl and one Barred Owl were also captured and banded.

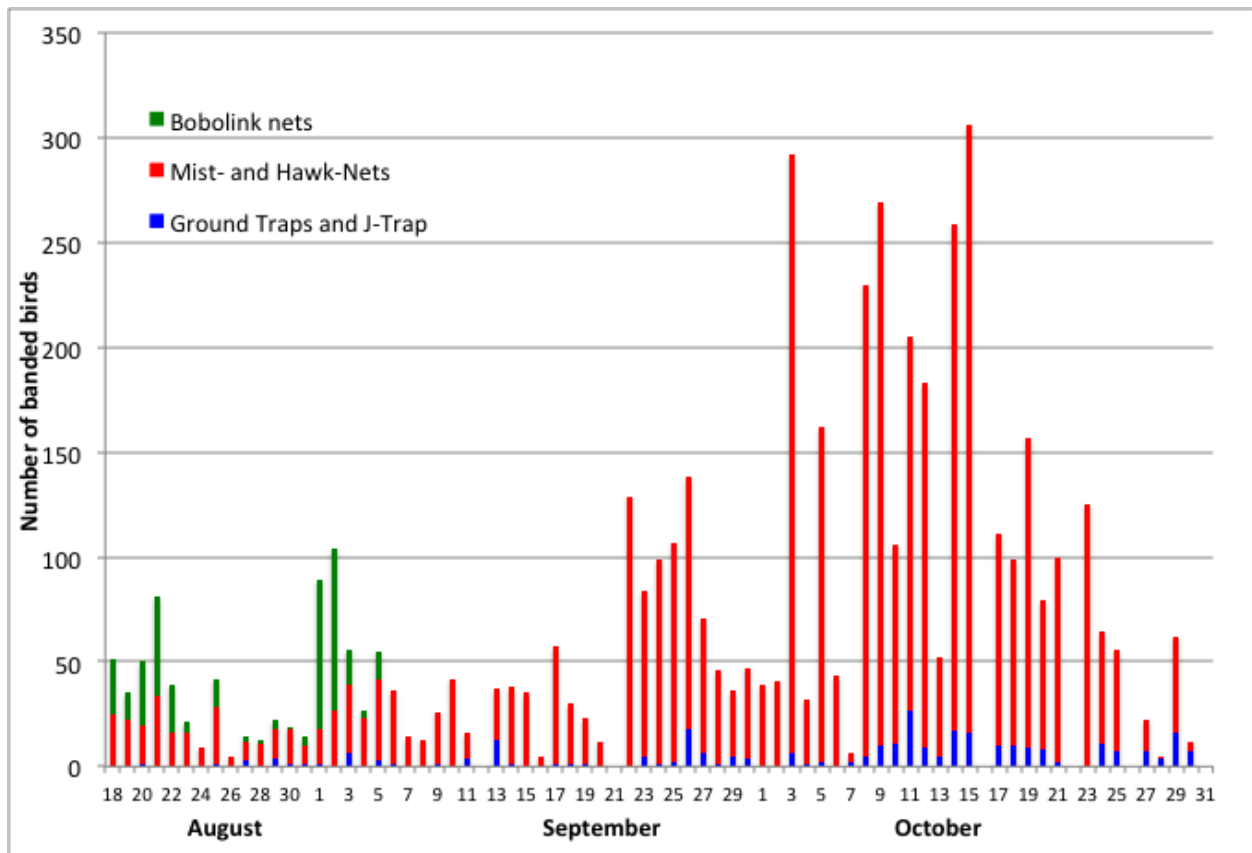


Fig.1. Daily number of banded birds at Prince Edward Point Bird Observatory, fall 2013.

Table 1. Number of days by number of individuals banded at Prince Edward Point Bird Observatory, spring 2013.

| Number of birds banded | Number of days |
|------------------------|----------------|
| 0-50 | 37 |
| 51-100 | 15 |
| 101-150 | 8 |
| 151-200 | 3 |
| >200 | 6 |

Table 2. Top 10 species of birds banded at Prince Edward Point Bird Observatory, fall 2013.

| Species | Total | % of banding total |
|-----------------------------|-------|--------------------|
| Golden-crowned Kinglet | 1363 | 27 |
| Ruby-crowned Kinglet | 760 | 15 |
| Slate-coloured Junco | 275 | 5 |
| Brown Creeper | 255 | 5 |
| Hermit Thrush | 224 | 4 |
| Bobolink | 199 | 4 |
| White-throated Sparrow | 156 | 3 |
| Magnolia Warbler | 135 | 3 |
| Black-throated Blue Warbler | 125 | 2 |
| Blue-headed Vireo | 96 | 2 |
| Total | 3588 | 71 |

Table 3. Number of species of birds by number of individuals banded at Prince Edward Point Bird Observatory, fall 2013.

| Number banded | Number of species | % of species total |
|---------------|-------------------|--------------------|
| 1 | 10 | 12 |
| 2 - 10 | 31 | 37 |
| 11 - 20 | 8 | 10 |
| 21 - 50 | 16 | 19 |
| 51 - 100 | 10 | 12 |
| 101 - 500 | 7 | 8 |
| 501 - 1000 | 1 | 1 |
| > 1000 | 1 | 1 |
| Total | 84 | |

Table 4. List of species banded in fall from 2001 to 2013 at Prince Edward Point Bird Observatory. Highest totals are highlighted in yellow, lowest in blue.

| Species name | 2001 | 2002 | 2003 | 2004 | 2005 | 2006 | 2007 | 2008 | 2009 | 2010 | 2011 | 2012 | 2013 | Total |
|---------------------------|------|------|------|------|------|------|------|------|------|------|------|------|------|-------|
| Northern Harrier | 1 | | | | | | | | | | | | | 1 |
| Sharp-shinned Hawk | 30 | 26 | 25 | 26 | 56 | 55 | 48 | 48 | 57 | 71 | 71 | 59 | 28 | 600 |
| Cooper's Hawk | 2 | 1 | | 1 | 2 | 2 | 4 | 1 | 1 | 1 | 2 | 1 | | 18 |
| Northern Goshawk | 1 | | | | 1 | | | | | | 1 | 1 | 1 | 5 |
| Broad-winged Hawk | | 1 | | 1 | | | 5 | | 3 | 1 | 1 | 1 | | 13 |
| Red-tailed Hawk | 1 | 1 | | 1 | | | | | | | | | | 3 |
| Merlin | | | 1 | | | | | | 2 | 1 | 3 | 2 | | 9 |
| Semi-palmated Plover | 3 | | | | | | | | | | | | | 3 |
| Spotted Sandpiper | 1 | | | | | | | | | | | | | 1 |
| Least Sandpiper | | | | | | | | | 2 | | | | | 2 |
| American Woodcock | | | | | | | | | | | | 1 | | 1 |
| Mourning Dove | 1 | | 5 | 7 | 6 | 5 | 14 | | 13 | 4 | 6 | 18 | 3 | 82 |
| Black-billed Cuckoo | 1 | 2 | 3 | 2 | 1 | 4 | 2 | 1 | 5 | 3 | 1 | 2 | | 27 |
| Yellow-billed Cuckoo | 1 | 2 | 1 | | | | 1 | | | | 1 | | 2 | 8 |
| Eastern Screech-Owl | 3 | | 2 | 1 | 1 | 3 | 4 | | 4 | 2 | | 1 | 1 | 22 |
| Great Horned Owl | | 1 | | | | | | | | | | | | 1 |
| Barred Owl | 2 | 4 | 2 | 5 | 3 | | 6 | | 2 | 1 | | 15 | | 40 |
| Long-eared Owl | 4 | | 1 | | | | 2 | | | | | 1 | | 8 |
| Northern Saw-whet Owl | 187 | 271 | 332 | 436 | 273 | 196 | 605 | 352 | 279 | 451 | 338 | 562 | 212 | 4494 |
| Whip-poor-will | | 1 | | | 1 | 1 | | | | | | | | 3 |
| Belted Kingfisher | | | | 1 | | 2 | 1 | | | | | 1 | 1 | 6 |
| Red-headed Woodpecker | | | | | | | | | | | | 1 | | 1 |
| Red-bellied Woodpecker | | | | 1 | | | | | 1 | 1 | | 1 | | 4 |
| Yellow-bellied Sapsucker | 18 | 7 | 8 | 19 | 11 | 41 | 42 | 12 | 45 | 30 | 8 | 35 | 25 | 301 |
| Downy Woodpecker | 5 | 4 | 4 | 5 | 5 | 12 | 8 | 9 | 13 | 3 | 3 | 2 | 4 | 77 |
| Hairy Woodpecker | 9 | 2 | 18 | 7 | 1 | 4 | 16 | 3 | 11 | 4 | 3 | 4 | | 82 |
| Yellow-shafted Flicker | 11 | 8 | 6 | 6 | 5 | 24 | 16 | 13 | 6 | 7 | 8 | 13 | 18 | 141 |
| Flicker Intergrade | 1 | | | | | | | | 1 | | | 1 | | 3 |
| Pileated Woodpecker | | | | | | | 1 | 1 | | | | | | 2 |
| Olive-sided Flycatcher | 1 | | | | | | 1 | | | | | | | 2 |
| Eastern Wood-Pewee | 15 | 8 | 6 | 12 | 16 | 13 | 14 | 5 | 16 | 12 | 6 | 11 | 9 | 143 |
| Yellow-bellied Flycatcher | 25 | 30 | 12 | 40 | 23 | 31 | 30 | 40 | 37 | 31 | 31 | 44 | 52 | 426 |
| Traill's Flycatcher | 18 | 19 | 12 | 19 | 10 | 32 | 18 | 12 | 27 | 13 | 25 | 43 | 32 | 280 |
| Least Flycatcher | 22 | 24 | 23 | 34 | 43 | 36 | 28 | 18 | 22 | 23 | 15 | 46 | 20 | 354 |
| Eastern Phoebe | 42 | 46 | 35 | 26 | 12 | 29 | 12 | 10 | 42 | 27 | 21 | 32 | 34 | 368 |
| Great Crested Flycatcher | 2 | | | 3 | 4 | 8 | 5 | 1 | 5 | 9 | 2 | 2 | 2 | 43 |

| Species name | 2001 | 2002 | 2003 | 2004 | 2005 | 2006 | 2007 | 2008 | 2009 | 2010 | 2011 | 2012 | 2013 | Total |
|----------------------------|------|------|------|------|------|------|------|------|------|------|------|------|------|-------|
| Eastern Kingbird | | 1 | | | | | | 1 | | 1 | 4 | 1 | 1 | 9 |
| Northern Shrike | 2 | | | 1 | | | | | 3 | 2 | 1 | 1 | | 10 |
| White-eyed Vireo | | | | 1 | | | | 2 | | 1 | | | | 4 |
| Blue-headed Vireo | 171 | 83 | 74 | 134 | 230 | 123 | 125 | 112 | 179 | 139 | 144 | 175 | 96 | 1785 |
| Warbling Vireo | 1 | 1 | 1 | 2 | | 4 | 2 | 1 | 1 | 5 | 7 | 8 | 10 | 43 |
| Philadelphia Vireo | 2 | 4 | 7 | 11 | 8 | 20 | 8 | 13 | 3 | 8 | 14 | 17 | 7 | 122 |
| Red-eyed Vireo | 55 | 26 | 24 | 69 | 153 | 161 | 82 | 93 | 78 | 166 | 130 | 129 | 61 | 1227 |
| Blue Jay | 576 | 46 | 250 | 76 | 108 | 103 | 242 | 301 | 167 | 142 | 98 | 218 | 78 | 2405 |
| Purple Martin | | | | | | | | | | | 1 | | 5 | 6 |
| Barn Swallow | 5 | | | | | | | | | | 2 | 1 | | 8 |
| Black-capped Chickadee | 770 | 11 | 37 | 65 | 1491 | 14 | 216 | 27 | 134 | 731 | 24 | 322 | 22 | 3864 |
| Boreal Chickadee | | | | | 1 | | | | | | | | | 1 |
| Eastern Tufted Titmouse | 1 | | 1 | | | | | | | | | | | 2 |
| Red-breasted Nuthatch | 28 | | 33 | 33 | 20 | 1 | 39 | 7 | 16 | 45 | 1 | 129 | 2 | 354 |
| White-breasted Nuthatch | 46 | | 27 | 9 | 42 | 4 | 56 | 5 | 31 | 6 | 6 | 23 | 1 | 256 |
| Brown Creeper | 235 | 191 | 242 | 198 | 235 | 271 | 189 | 169 | 199 | 239 | 231 | 246 | 255 | 2900 |
| Carolina Wren | | | | | | | | 1 | | | | 1 | | 2 |
| House Wren | 7 | 26 | 13 | 25 | 20 | 13 | 15 | 13 | 19 | 6 | 8 | 8 | 7 | 180 |
| Winter Wren | 22 | 44 | 27 | 34 | 76 | 88 | 79 | 33 | 51 | 34 | 24 | 20 | 22 | 554 |
| Golden-crowned Kinglet | 691 | 1000 | 716 | 1682 | 668 | 787 | 420 | 429 | 744 | 1132 | 510 | 715 | 1363 | 10857 |
| Ruby-crowned Kinglet | 339 | 550 | 612 | 827 | 809 | 1216 | 477 | 399 | 858 | 351 | 388 | 442 | 760 | 8028 |
| Blue-gray Gnatcatcher | | 2 | 1 | 2 | 4 | 6 | | | 5 | | 2 | 2 | 1 | 25 |
| Eastern Bluebird | | | | | | | | 1 | | | | | | 1 |
| Veery | 27 | 4 | 5 | 4 | 16 | 9 | 17 | 7 | 9 | 22 | 10 | 25 | 3 | 158 |
| Gray-cheeked Thrush | 84 | 71 | 63 | 163 | 135 | 89 | 145 | 37 | 57 | 66 | 63 | 91 | 68 | 1132 |
| Gray-ch./Bicknell's Thrush | 2 | | | | | | 1 | | | | | | | 3 |
| Bicknell's Thrush | | | | 1 | | | | | | | | | | 1 |
| Swainson's Thrush | 219 | 65 | 38 | 60 | 231 | 102 | 105 | 81 | 119 | 130 | 71 | 216 | 65 | 1502 |
| Hermit Thrush | 269 | 251 | 193 | 134 | 135 | 179 | 153 | 165 | 313 | 173 | 154 | 222 | 224 | 2565 |
| Wood Thrush | 10 | 1 | 1 | 1 | 1 | | 2 | 1 | 2 | 2 | 2 | 2 | 4 | 29 |
| American Robin | 26 | 14 | 15 | 4 | 8 | 29 | 22 | 16 | 33 | 32 | 18 | 16 | 21 | 254 |
| Gray Catbird | 27 | 11 | 8 | 11 | 9 | 25 | 25 | 23 | 24 | 21 | 21 | 22 | 14 | 241 |
| Brown Thrasher | 4 | 4 | 4 | 2 | 2 | 5 | 6 | 4 | 6 | 5 | 9 | 11 | 10 | 72 |
| European Starling | | | | | | 1 | 3 | 1 | | | 1 | 1 | | 7 |
| Cedar Waxwing | 1 | 1 | 22 | 6 | 9 | 4 | 1 | 13 | 4 | 13 | 23 | 18 | 8 | 123 |
| Golden-winged Warbler | 1 | | | | | 1 | | | | | 1 | | | 3 |
| Tennessee Warbler | 4 | 7 | 2 | 5 | 27 | 13 | 12 | 11 | 10 | 17 | 28 | 10 | 19 | 165 |
| Orange-crowned Warbler | 4 | 8 | 2 | 8 | 3 | 2 | 4 | 4 | 12 | 4 | 1 | 6 | 1 | 59 |
| Nashville Warbler | 56 | 54 | 50 | 46 | 176 | 97 | 69 | 80 | 74 | 88 | 92 | 56 | 49 | 987 |

| Species name | 2001 | 2002 | 2003 | 2004 | 2005 | 2006 | 2007 | 2008 | 2009 | 2010 | 2011 | 2012 | 2013 | Total |
|--------------------------|------|------|------|------|------|------|------|------|------|------|------|------|------|-------|
| Northern Parula | 3 | 5 | 3 | 2 | 14 | 15 | 8 | 10 | 12 | 10 | 22 | 10 | 2 | 116 |
| Yellow Warbler | 5 | 14 | 5 | 17 | 5 | 34 | 8 | 6 | 8 | 5 | 21 | 26 | 7 | 161 |
| Chestnut-sided Warbler | 13 | 14 | 25 | 14 | 23 | 37 | 23 | 50 | 24 | 28 | 30 | 25 | 14 | 320 |
| Magnolia Warbler | 187 | 146 | 80 | 174 | 259 | 297 | 166 | 250 | 173 | 197 | 315 | 198 | 135 | 2577 |
| Cape May Warbler | | 1 | | 1 | 2 | 5 | 1 | 1 | 1 | 4 | 2 | 1 | 2 | 21 |
| Black-thr. Blue Warbler | 212 | 75 | 82 | 155 | 145 | 226 | 166 | 252 | 149 | 149 | 209 | 209 | 125 | 2154 |
| Myrtle Warbler | 165 | 363 | 141 | 75 | 600 | 363 | 143 | 77 | 164 | 107 | 180 | 363 | 82 | 2823 |
| Black-thr. Green Warbler | 39 | 37 | 29 | 16 | 84 | 76 | 27 | 59 | 37 | 41 | 37 | 58 | 37 | 577 |
| Blackburnian Warbler | 2 | 6 | 4 | 9 | 12 | 9 | 10 | 11 | 12 | 9 | 17 | 8 | 9 | 118 |
| Pine Warbler | | 1 | | | | | 1 | 1 | 1 | 3 | 1 | 1 | 2 | 11 |
| Western Palm Warbler | 10 | 24 | 11 | 4 | 21 | 8 | 9 | 5 | 10 | 8 | 5 | 9 | 10 | 134 |
| Yellow Palm Warbler | | 1 | 1 | | 2 | | 1 | | | 1 | | 2 | | 8 |
| Bay-breasted Warbler | 14 | 7 | 7 | 14 | 27 | 29 | 13 | 12 | 17 | 26 | 16 | 12 | 12 | 206 |
| Blackpoll Warbler | 81 | 53 | 39 | 59 | 174 | 157 | 70 | 149 | 77 | 104 | 308 | 160 | 78 | 1509 |
| Black-and-White Warbler | 29 | 25 | 16 | 20 | 17 | 44 | 22 | 31 | 23 | 31 | 45 | 28 | 21 | 352 |
| American Redstart | 44 | 39 | 41 | 45 | 93 | 101 | 63 | 65 | 98 | 98 | 154 | 107 | 79 | 1027 |
| Ovenbird | 28 | 20 | 16 | 20 | 34 | 27 | 17 | 28 | 31 | 24 | 24 | 22 | 27 | 318 |
| Northern Waterthrush | 24 | 18 | 10 | 11 | 31 | 33 | 16 | 19 | 7 | 19 | 37 | 28 | 21 | 274 |
| Connecticut Warbler | | | | 1 | 1 | | | | | 1 | 1 | 1 | 1 | 6 |
| Mourning Warbler | | 3 | 2 | 3 | 3 | 4 | 2 | 3 | 8 | 2 | 4 | 9 | 4 | 47 |
| Common Yellowthroat | 45 | 31 | 53 | 75 | 63 | 65 | 65 | 33 | 39 | 38 | 57 | 66 | 48 | 678 |
| Hooded Warbler | | | | | | | | 1 | | | | 1 | | 2 |
| Wilson's Warbler | 9 | 16 | 13 | 27 | 48 | 35 | 22 | 45 | 14 | 39 | 53 | 17 | 13 | 351 |
| Canada Warbler | 10 | 7 | 6 | 9 | 7 | 21 | 18 | 19 | 17 | 21 | 41 | 21 | 6 | 203 |
| Yellow-breasted Chat | 1 | | | | | | | | 1 | | | | | 2 |
| Scarlet Tanager | 9 | 3 | 4 | 7 | 18 | 14 | 10 | 8 | 5 | 18 | 11 | 7 | 4 | 118 |
| Eastern Towhee | 5 | 2 | 12 | 2 | 4 | 5 | 4 | 8 | 3 | 1 | 7 | 7 | 6 | 66 |
| American Tree Sparrow | 6 | 2 | 3 | 2 | 1 | 6 | | | 3 | 2 | 1 | 2 | 2 | 30 |
| Chipping Sparrow | 25 | 15 | 9 | 48 | 23 | 27 | 21 | 45 | 17 | 32 | 18 | 17 | 21 | 318 |
| Clay-colored Sparrow | | | 1 | 6 | | | | | | | | | | 7 |
| Field Sparrow | 7 | 4 | 2 | 17 | 3 | 2 | 1 | 2 | | 2 | 2 | 7 | 2 | 51 |
| Vesper Sparrow | | | | | 1 | | | 1 | | | | | 3 | 5 |
| Savannah Sparrow | | | | | | | | | | | 1 | | | 1 |
| Fox Sparrow | 10 | 10 | 10 | 19 | 9 | 19 | 17 | 2 | 9 | 8 | 8 | 7 | 8 | 136 |
| Song Sparrow | 66 | 22 | 33 | 61 | 30 | 50 | 74 | 33 | 36 | 16 | 17 | 48 | 69 | 555 |
| Lincoln's Sparrow | 8 | 3 | 2 | 3 | 4 | 1 | 4 | | 1 | | 1 | 2 | | 29 |
| Swamp Sparrow | 9 | 2 | 5 | 3 | 2 | 6 | 6 | 2 | 4 | 2 | 1 | 1 | 4 | 47 |
| White-throated Sparrow | 127 | 83 | 121 | 146 | 155 | 188 | 159 | 92 | 128 | 178 | 124 | 144 | 156 | 1801 |

| Species name | 2001 | 2002 | 2003 | 2004 | 2005 | 2006 | 2007 | 2008 | 2009 | 2010 | 2011 | 2012 | 2013 | Total |
|---------------------------|------|------|------|------|------|------|------|------|------|------|------|------|------|-------|
| White-crowned Sparrow | 39 | 28 | 122 | 39 | 58 | 52 | 123 | 24 | 72 | 89 | 15 | 34 | 20 | 715 |
| Eastern White-crowned Sp. | 46 | | 18 | 13 | 9 | 7 | 68 | 8 | 32 | 9 | | 8 | 47 | 265 |
| Gambel's White-cr. Sp. | | | 2 | | | | | | | | | | 1 | 3 |
| Slate-colored Junco | 200 | 122 | 166 | 276 | 349 | 179 | 143 | 149 | 163 | 210 | 241 | 123 | 275 | 2596 |
| Oregon Junco | | | | | 1 | 2 | | | | | | | | 3 |
| Northern Cardinal | 4 | 2 | | 1 | 2 | | 4 | | 6 | 4 | | 20 | 1 | 44 |
| Rose-breasted Grosbeak | 2 | 9 | 4 | 9 | 10 | 11 | 15 | 13 | 17 | 3 | 14 | 6 | 2 | 115 |
| Indigo Bunting | | | 2 | | | 3 | 2 | | | | 2 | | 1 | 10 |
| Dickcissel | 1 | | | | | | | | | | | | | 1 |
| Bobolink | | | | | | | | 1 | 389 | 415 | 246 | 311 | 199 | 1561 |
| Red-winged Blackbird | 1 | | 1 | | | 1 | | | | | | | | 3 |
| Rusty Blackbird | 3 | | 3 | | | 5 | | | | 1 | 10 | 2 | 5 | 29 |
| Common Grackle | 8 | 1 | 1 | 1 | | 14 | | 1 | 2 | 15 | 7 | | | 50 |
| Brown-headed Cowbird | 2 | | | 1 | | | | | | | 2 | | | 5 |
| Orchard Oriole | | | | | | | | | | | 1 | | | 1 |
| Baltimore Oriole | 16 | | 1 | 3 | 2 | 5 | 1 | | 2 | | 4 | 5 | 10 | 49 |
| Pine Grosbeak | 1 | | | | | | | | | | | | | 1 |
| Purple Finch | 37 | | 12 | 4 | 22 | 35 | 345 | 17 | 49 | 120 | 12 | 350 | | 1003 |
| House Finch | 43 | 13 | 3 | 4 | 3 | 19 | 7 | 4 | 3 | 1 | 4 | 18 | | 122 |
| White-winged Crossbill | 1 | | | | | | | | | | | | | 1 |
| Common Redpoll | 13 | | | | | | | | | | | | | 13 |
| Pine Siskin | 341 | | 5 | 5 | 1 | | 54 | 2 | 2 | 30 | 2 | 202 | | 644 |
| American Goldfinch | 361 | 320 | 520 | 273 | 128 | 31 | 1212 | 26 | 1865 | 210 | 96 | 2579 | 45 | 7666 |
| Evening Grosbeak | 8 | | | | | | 10 | | 1 | | | 18 | | 37 |
| House Sparrow | 2 | | 1 | | | | | | | 1 | | | | 4 |
| Total | 6414 | 4481 | 4611 | 5961 | 7591 | 6133 | 6549 | 4141 | 7477 | 6609 | 5061 | 9354 | 5022 | 79404 |
| Number of species | 105 | 83 | 91 | 94 | 89 | 88 | 93 | 86 | 93 | 93 | 98 | 104 | 87 | 135 |

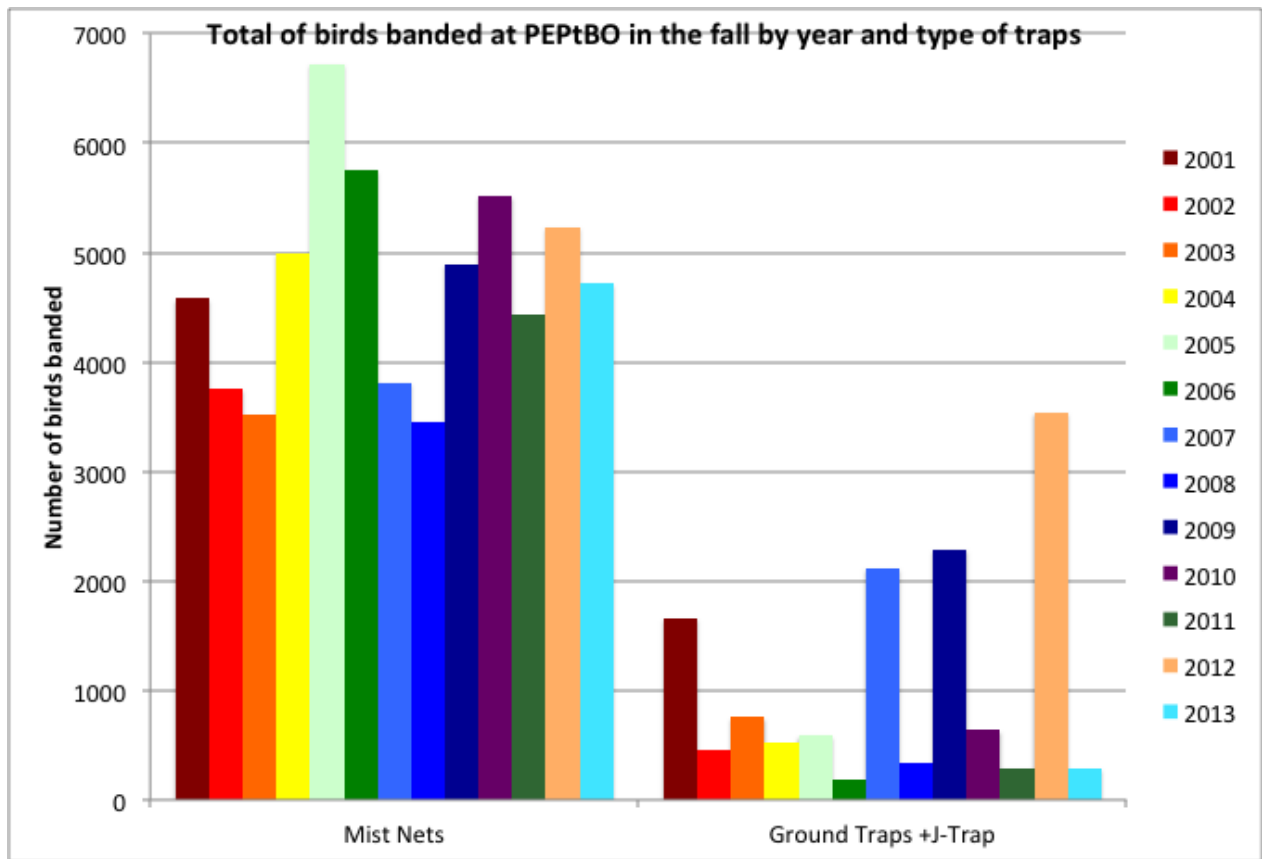


Fig.2: Number of birds banded by mist-nets and ground and J- traps at Prince Edward Point Bird Observatory in fall for the years 2001 to 2013.

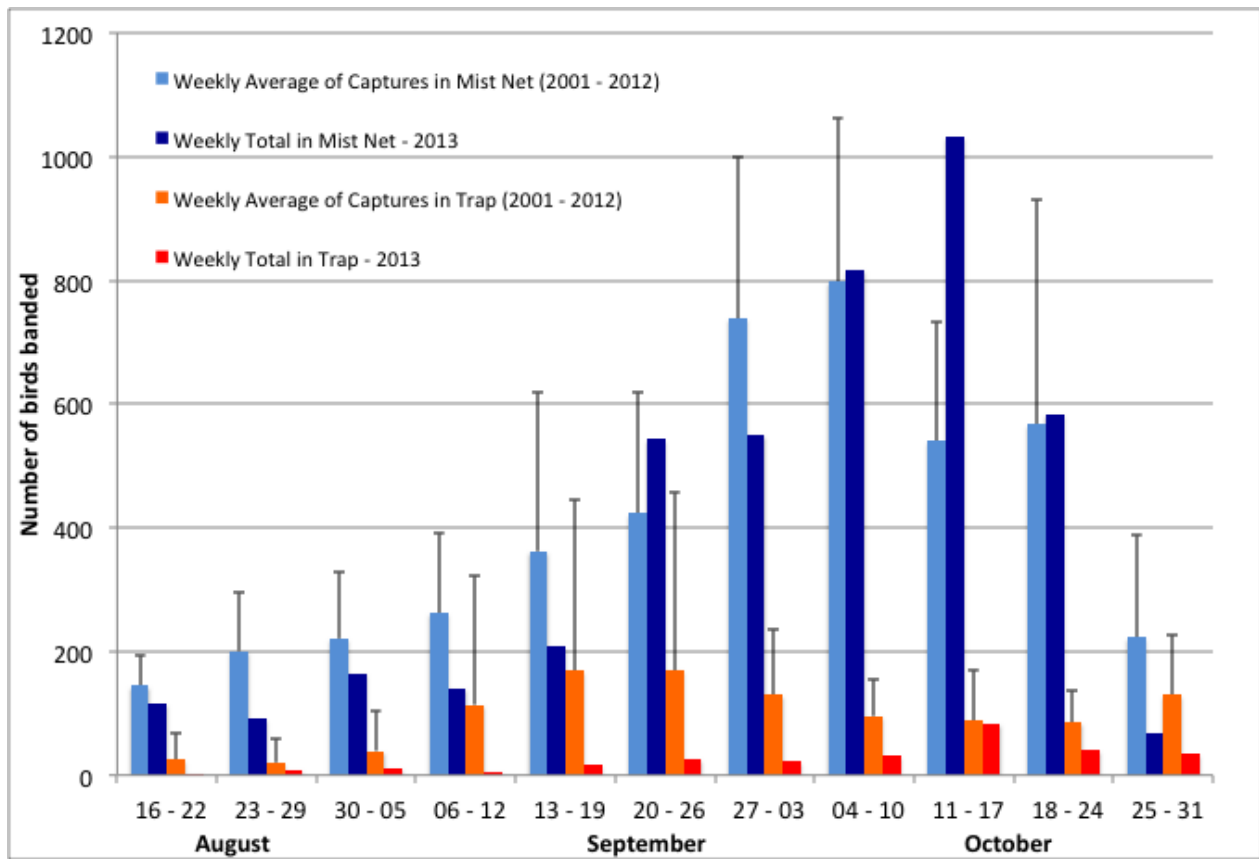


Fig.3: Weekly average (of 2001 to 2012 years) and weekly total of 2013 of birds banded by mist-nets and ground and J- traps at Prince Edward Point Bird Observatory in fall for the years 2001 to 2013.

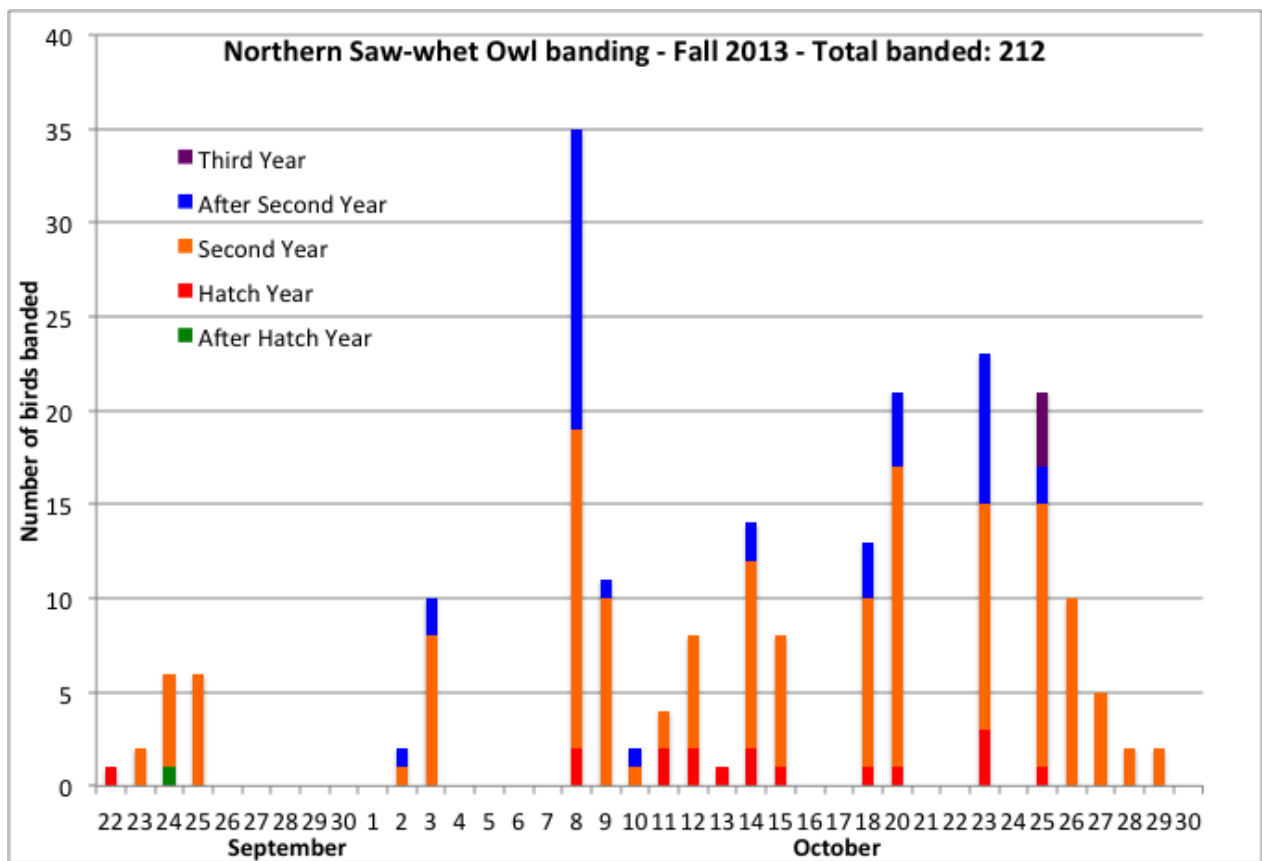


Fig. 4: Daily total of banded Northern Saw-whet Owls by age at Prince Edward Point Bird Observatory in fall 2013.